

Specialist Disability Accommodation Journey

Call CareChoice on 1300 737 942 to discuss your situation. Our housing expert and client engagement manager will support you and outline options. We'll assist you on the journey to secure SDA funding and a new home through CareChoice Homes.



Where are you on the SDA journey?



At your annual NDIS planning meeting, you need to request ample hours for an occupational therapist assessment and support coordination to pursue SDA eligibility.



Are you unsure whether you qualify for SDA funding?

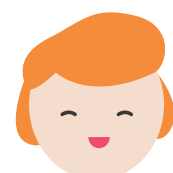


You select an occupational therapist to prepare a clinical housing assessment report. We can help with recommendations!



Do you have NDIS funding for an occupational therapist assessment & support coordination to pursue SDA funding?

Your occupational therapist completes your clinical housing assessment report.



Your support coordinator compiles your application and submits it to the SDA Panel of the National Disability Insurance Agency (NDIA).



Have you applied for SDA funding but don't have it in your NDIS plan yet?



The SDA Panel approves SDA funding with a set of key criteria.



Do you have SDA funding and want to find your new home?

Based on your SDA approval criteria, your CareChoice Homes application progresses for consideration.



Our client engagement manager meets with you to develop your day-to-day support plan and inform the process of finding 1-2 likeminded housemates.



CareChoice Homes introduces you to potential housemates and provides you with the best house to suit your needs.



You will receive a:

- Letter of offer
- A service agreement for supported independent living
- A residential agreement



Congratulations!
We hope you enjoy your forever home.