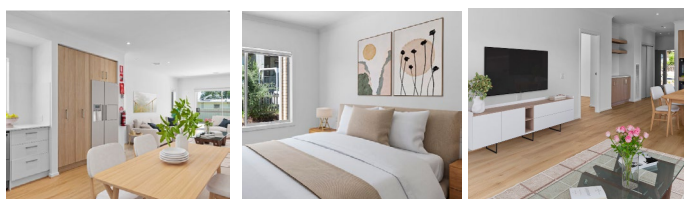


CareChoice Homes.

Current and upcoming SDA property vacancies as of **June 2026**.

Location	Property description (OOA= Onsite Overnight Assistance)	Appropriate for people with SDA funding in these categories				Appendix H/MTA*	Vacancies	Availability
		Fully Accessible	Improved Liveability	Robust	High Physical Support			
South-Eastern Suburbs								
Frankston John Street	1 house, 2 participants + OOA		✓	✓			1	Available now
Doveton Power Road	4 single-occupancy villas + OOA			✓			2	Available now
Pakenham Simon Drive	1 unit, 1 participant			✓			1	Available now
Pakenham Anderson Street	2 houses, 6 participants + OOA				✓		1	Available now
Pakenham Cameron Way	1 house, 3 participants + OOA				✓		1	Available now
Bonbeach Scotch Parade	2 houses, 2 participants + OOA		✓				2	Available now
Carrum Downs Clifton Grove	7 single-occupancy villas + OOA		✓	✓			4	Available now
Chelsea Sherwood Avenue	1 house, 2 participants + OOA				✓		2	Available now
Carrum Church Road	1 house, 2 participants + OOA				✓		2	Available now
Seaford Belvedere Road	1 house, 2 participants + OOA		✓				2	Available now
Mentone Riviera Street	2 houses, 6 participants + OOA	✓		✓			6	October 2026
Eastern suburbs								
Surrey Hills Warrigal Road	1 house, 3 participants + OOA	✓	✓		✓		3	August 2026
Croydon Niel Street	1 house, 3 participants + OOA				✓		3	August 2026
Burwood Keogh Street	1 house, 3 participants + OOA	✓		✓	✓		3	September 2026
Ringwood Nelson Street	1 house, 3 participants + OOA				✓		3	September 2026
Mooroolbark Neville Street	1 house, 3 participants + OOA				✓		3	November 2026
Mooroolbark Neville Street	1 unit, 1 participant + OOA			✓			1	November 2026
Knoxfield David Street	1 house, 3 participants + OOA	✓	✓		✓		3	October 2026

Featured: North Bendigo – Brand New 2 Bedroom FA/IL Home



North Bendigo

SDA Category: Improved Liveability, Fully Accessible.

Features: Brand-new SDA home in Bendigo offering spacious, accessible living with private ensuites, OOA room and quality supports from experienced and compassionate staff.

Number of Bedrooms: 2
Number of Participants: 2
OOA Room: 1
Number of Vacancies: 1
SDA Design Category: Improved Liveability, Fully Accessible
Region: Regional
Available: Available Now

CareChoice Homes.

Current and upcoming SDA property vacancies as of **June 2026**.

Location	Property description (OOA= Onsite Overnight Assistance)	Appropriate for people with SDA funding in these categories				Appendix H/MTA*	Vacancies	Availability
		Fully Accessible	Improved Liveability	Robust	High Physical Support			
Northern Suburbs								
Mickleham Paprika Parade	1 house, 2 participants + OOA				✓		1	Available now
Fairfield Railway Place	3 x 1-bedroom apartments + OOA				✓		3	Available now
South Morang George Court	4 single-occupancy villas + OOA			✓			1	Available now
Wollert Vacca Close	1 house, 2 participants + OOA			✓			1	Available now
Western Suburbs/Barwon Region								
Mount Duneed Eaton Road	1 house, 2 participants + OOA	✓	✓		✓		1	Available now
Point Cook Sorrenburg Street	1 house, 2 participants + OOA	✓	✓				1	Available now
Werribee Satellite Drive	1 house, 3 participants + OOA	✓	✓				1	Available now
Wyndham Vale Boxer Drive	1 house, 2 participants + OOA		✓		✓		2	Available now
Armstrong Creek Marentelli Way	1 house, 2 participants + OOA	✓		✓			1	Available now
St Albans Lupin Court	1 house, 3 participants + OOA				✓		1	Available now
Wyndham Vale Aporum	1 house, 2 participants + OOA	✓	✓		✓		2	Available now
Corio Ontario Avenue	2 houses, 4 participants + OOA	✓	✓		✓		4	Available now
Regional Victoria								
Shepparton Maude Street	3 single-occupancy villas + OOA			✓			1	Available now
North Bendigo Redan Street	1 house, 2 participants + OOA				✓		1	Available now
Castlemaine Fryers Road	2 houses, 4 participants + OOA		✓	✓			1	Available now
Moe Albert Street	4 units, 8 participants + OOA				✓		8	August 2026
Long Gully Wood Street	1 house, 3 participants + OOA	✓	✓		✓		3	November 2026

We have a selection of Appendix H properties available in Mount Duneed and Wyndham Vale. For more information, please call **1300 737 942** or email carechoicehomes@carechoice.com.au